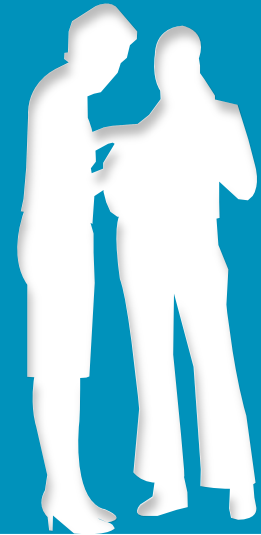




THE EUROPEAN TRAINING FOUNDATION

KEY ACTIVITIES IN THE ENLARGEMENT REGION



**MEETING OF MINISTRIES OF LABOUR OF THE WESTERN BALKAN ECONOMIES
EMPLOYMENT AND SOCIAL AFFAIRS PLATFORM
13 - 14 DECEMBER 2016
PODGORICA, MONTENEGRO**

STRATEGIC ANCHORS

COUNTRY STRATEGIC PRIORITIES

- GROWTH AND EMPLOYMENT PROMOTION
- SKILLS DEVELOPMENT AND RELEVANCE
- TACKLING INFORMALITY
- FIGHTING POVERTY AND SOCIAL VULNERABILITY

THE EUROPEAN UNION

- ENLARGEMENT STRATEGY, INCL. ECONOMIC GOVERNANCE
- EDUCATION, TRAINING, EMPLOYMENT AND SOCIAL POLICIES
- RENEWED FOCUS ON EU NEW SKILLS AGENDA



REGIONAL PRIORITIES

AS CONFIRMED BY 2016 TORINO PROCESS PRELIMINARY OUTCOMES:

NATIONAL QUALIFICATION FRAMEWORKS IMPLEMENTATION;

**TEACHING AND LEARNING PROCESSES (E.G. WBL; QUALITY ASSURANCE;
TEACHERS AND TRAINERS TRAINING)**

**POLICY MONITORING (EXPANDED EVIDENCE ON HRD; RIGA DELIVERABLES
MONITORING BY CANDIDATE COUNTRIES);**

SKILLS GAPS AND MISMATCHES



EMPLOYMENT, SKILLS AND EMPLOYABILITY

Objective: to improve both initial and continuous VET in terms of labour market intelligence and skills for employability

- Development and implementation of mechanisms to monitor labour market trends and use of information on skills needs for effective VET policy implementation;
- Development and implementation of comprehensive policies and programmes to facilitate young people's transitions to work



EMPL WORK CONTENT AND LEVELS - 2017

COUNTRIES: building capacity and actual implementation of a more balanced approach to skills intelligence to offer meaningful and timely information to both initial and continuous VET and employability measures

- initial and cont. VET system capacity to roll out tracer studies (XK, MK)
- refinement of existing practices for skills needs identification and capacity building for effective combination of data sources for a more complete picture on skills demand and supply (BA, ME)
- Capacity expansion at both sectoral and territorial level on skills needs identification and matching, e.g. ICT sector in Vojvodina region (RS)

REGION: RCC - expertise input to Employment and Social Affairs Platform, SEE 2020 Strategy monitoring;

- regional fora organised by the ILO, and other international organisations or donors



FOR FURTHER INFORMATION

VISIT OUR WEBSITE:
WWW.ETF.EUROPA.EU

EMAIL US:
CME@ETF.EUROPA.EU

